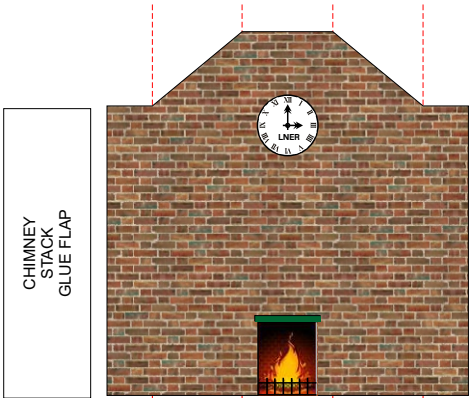


GLUE ONTO 300gsm CARD

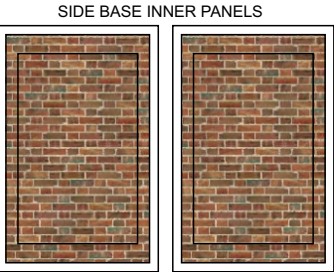


This kit is inspired by the Strathspey Signal Box but does contain a lot of artistic licence therefore it's not a true copy of the original building

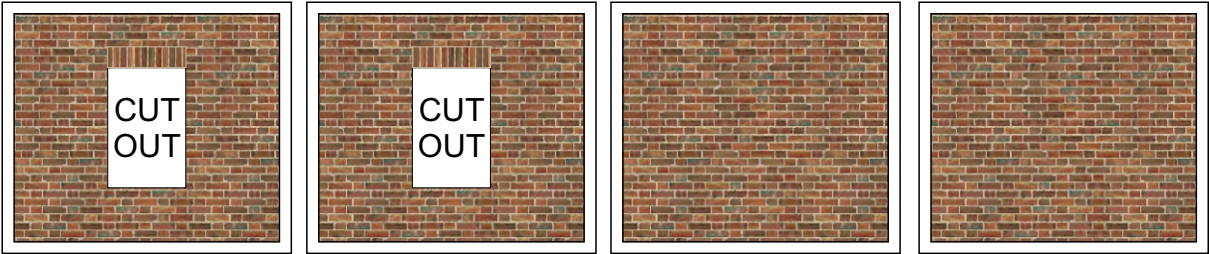
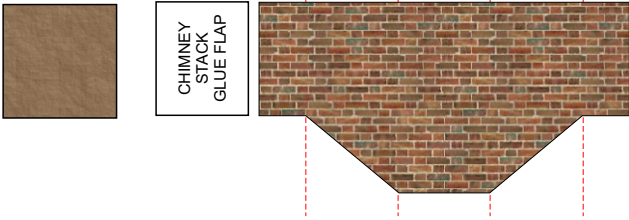
NORTH FANGORE
NORTH JCT 2



INTERNAL CHIMNEY STACK

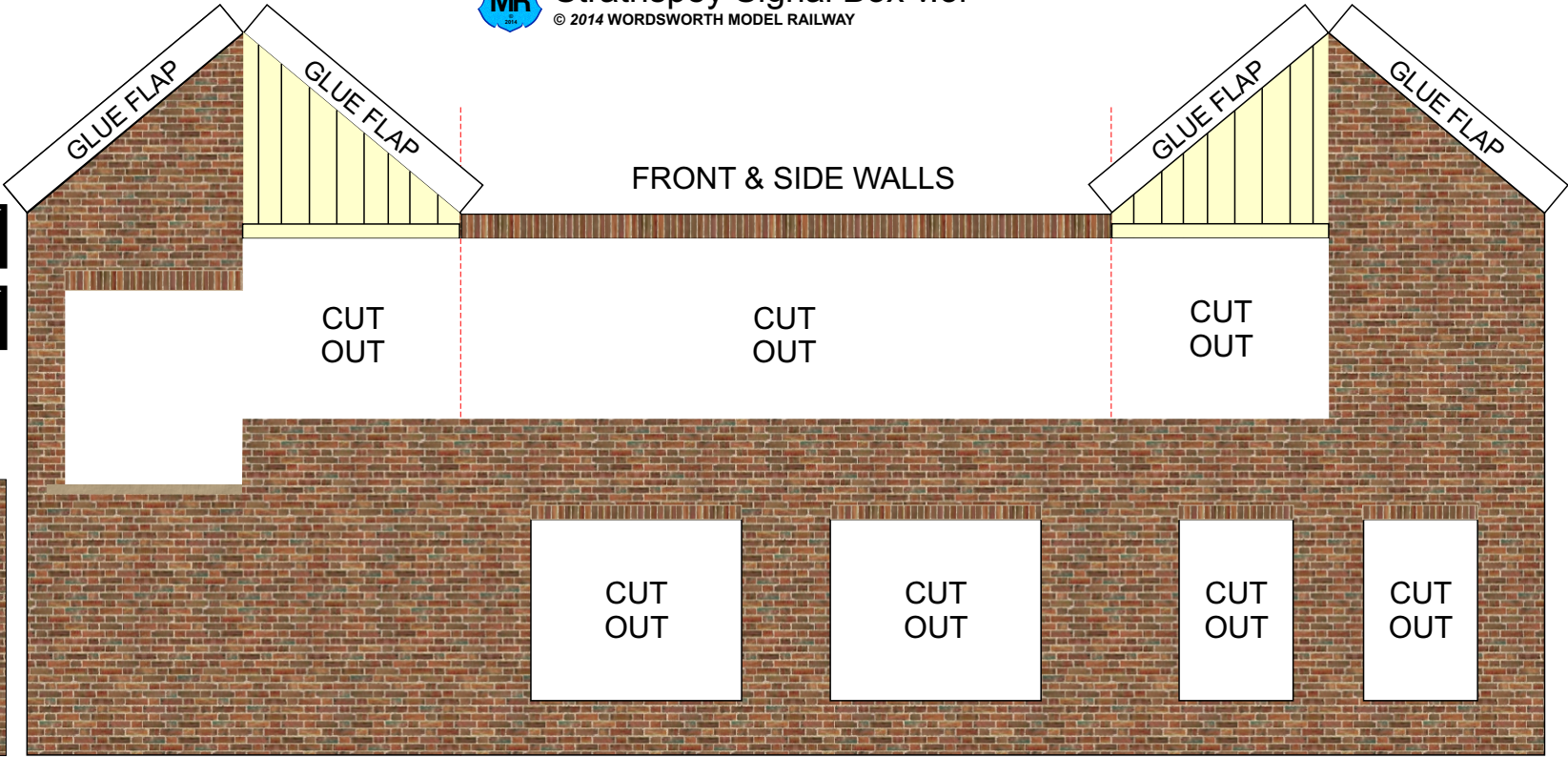


EXTERNAL CHIMNEY STACK

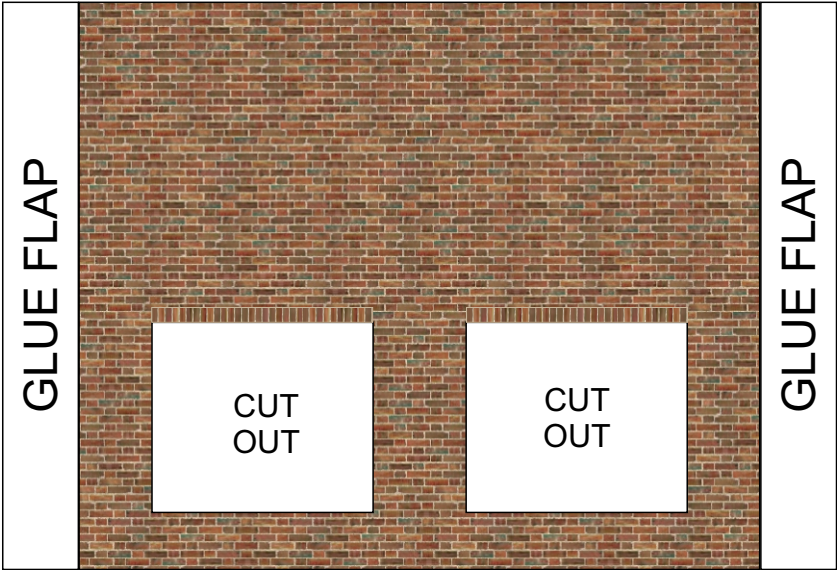


FRONT BASE INNER PANELS

REAR BASE INNER PANELS

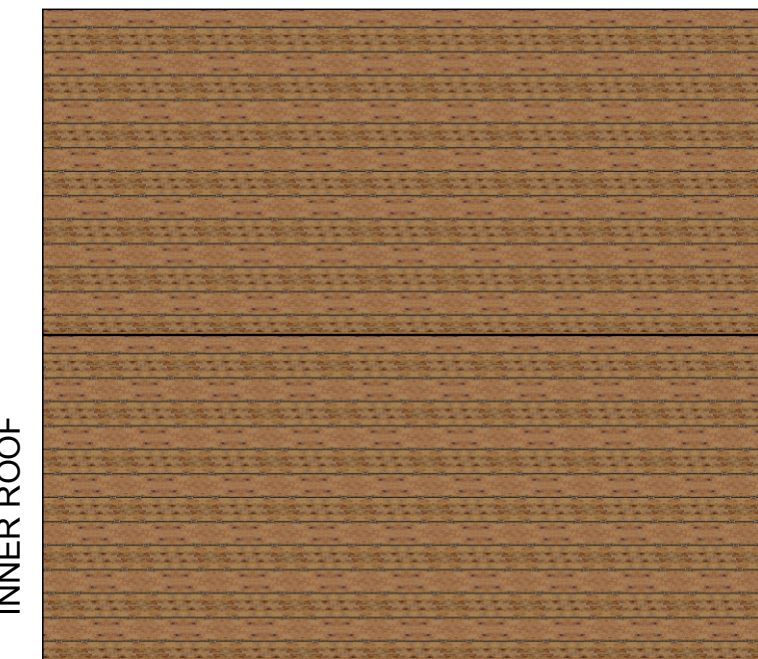


FRONT & SIDE WALLS



REAR WALL

INNER ROOF



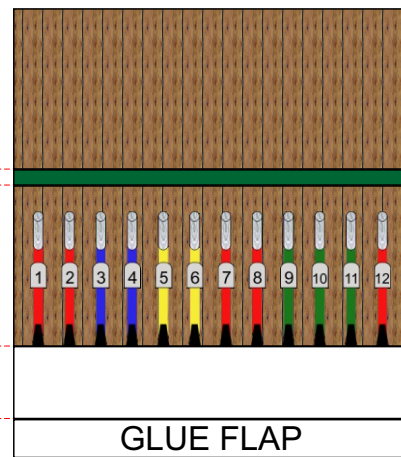
GLUE
STAIRS
HERE

STEP WALL

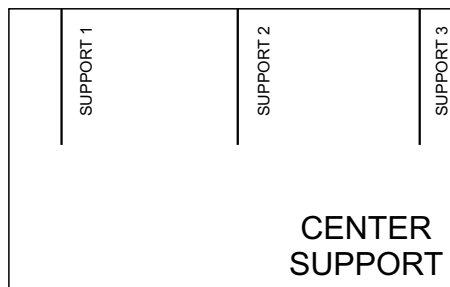
GLUE
STAIRS
HERE

CUT &
REMOVE

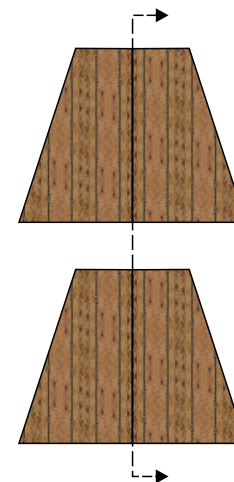
SIGNAL BOX UPPER FLOOR



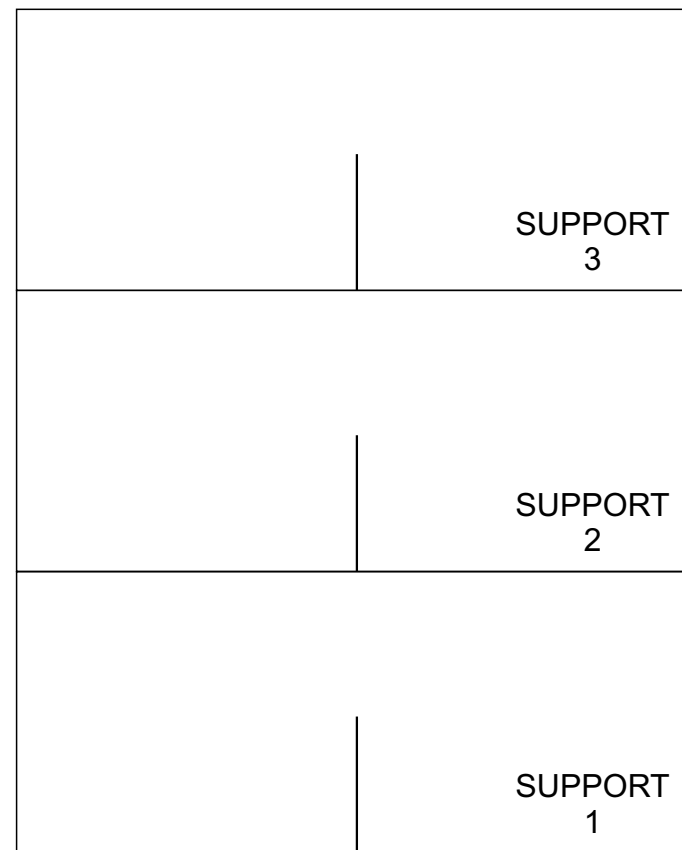
SIGNAL / POINT LEVER

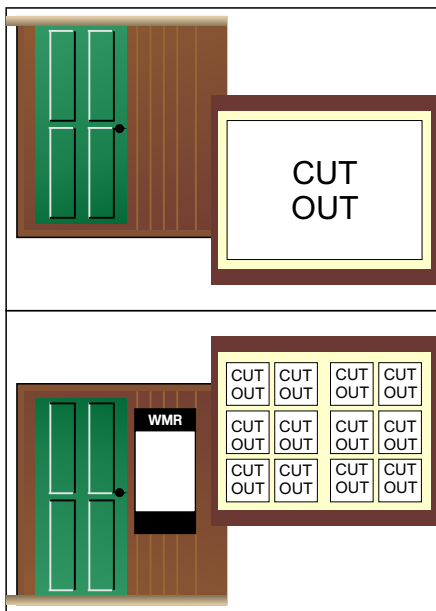


GLUE ONTO 300gsm CARD

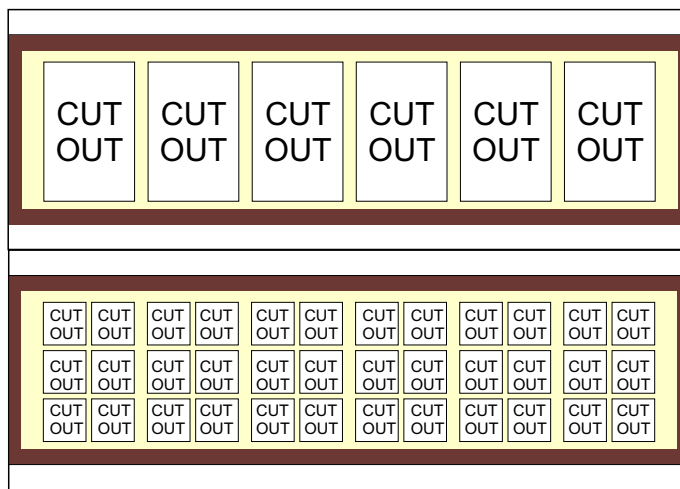


SIGNAL END FRAME

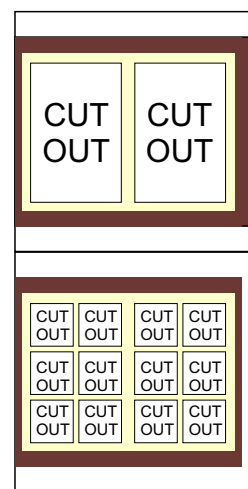




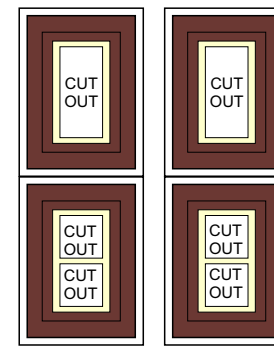
DOOR/WINDOW COVERING



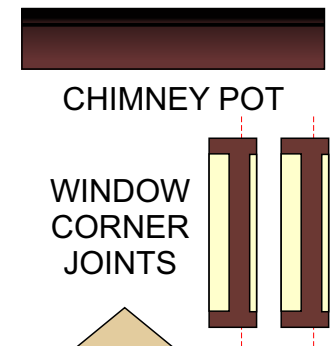
FRONT WINDOW COVERING



RIGHT WINDOW COVERING

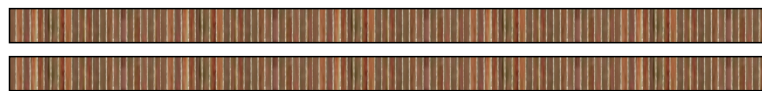


SMALL WINDOW COVERING



CHIMNEY POT

WINDOW CORNER JOINTS



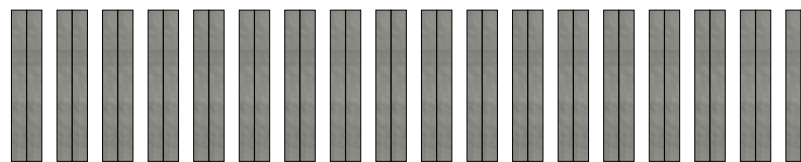
WALL CAPPING BRICKS



OUTER ROOF COVERING



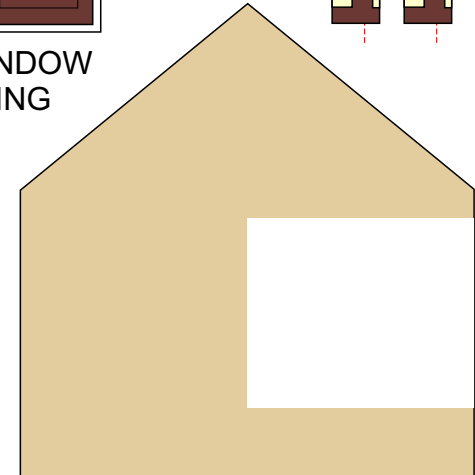
ROOF RIDGE TILES



FRONT WALL INNER COVERING

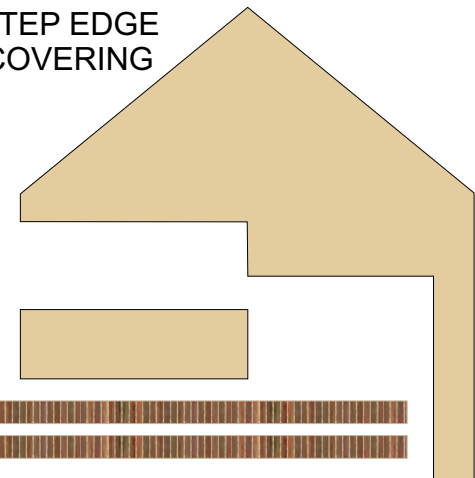


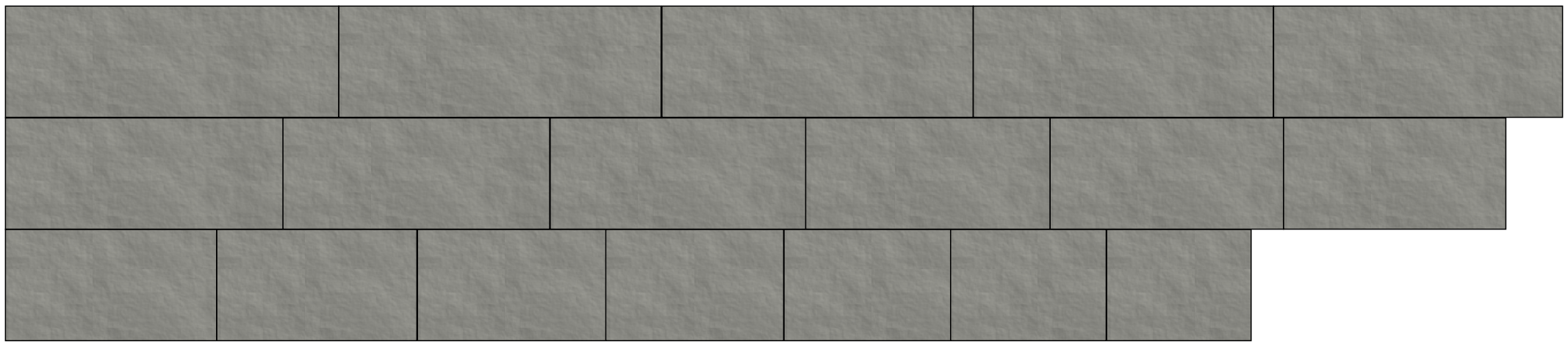
REAR WALL INNER COVERING



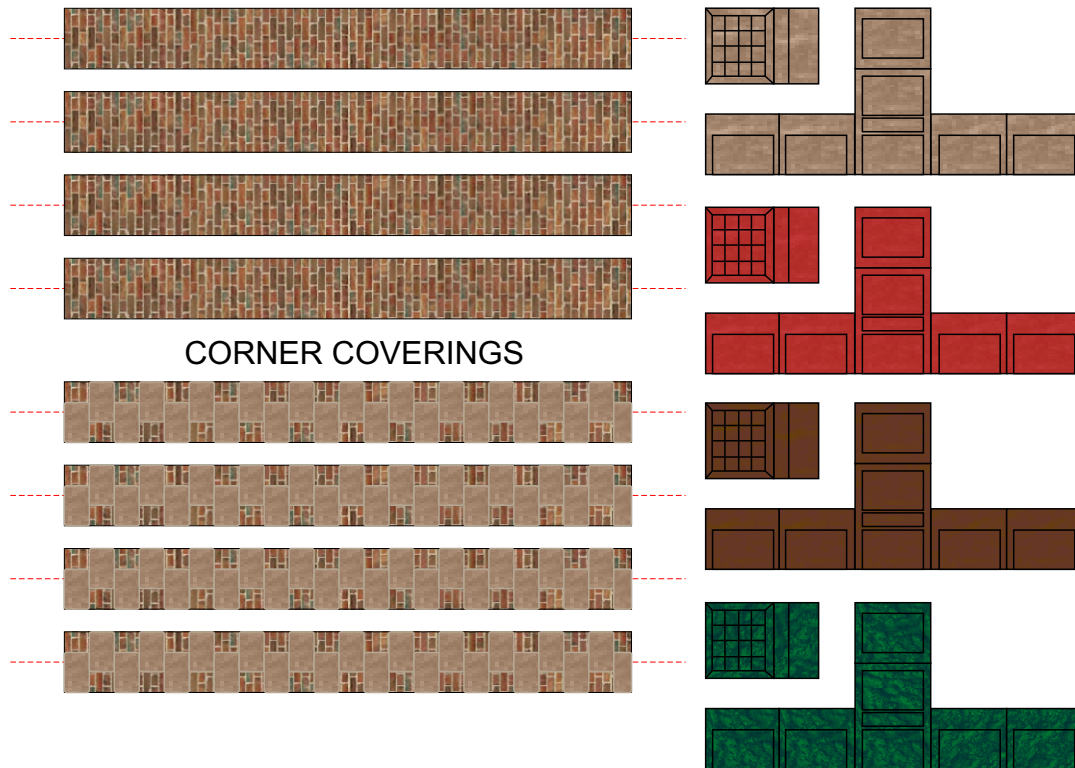
INNER WALL COVERING

STEP EDGE COVERING





2mm CARD STEPS

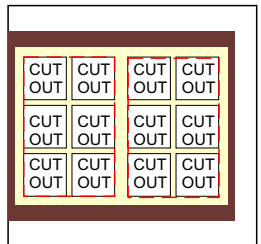
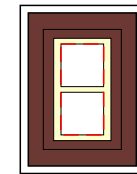


CORNER COVERINGS

ARM CHAIRS



EXAMPLE



TIP

If you decide to use the printed acetate windows then you still need to use the window sheets above but this time you would cut out the sections as shown above with the dotted red lines.

Once you have done that you carry on with the kit as normal.

You can view pictures of a similar style box in construction if you visit the New Railway Modellers Forum pages under the kits sections.

NOT NEEDED AS PART OF THE KIT

The kit comes with a few optional items to try and make it more user friendly.

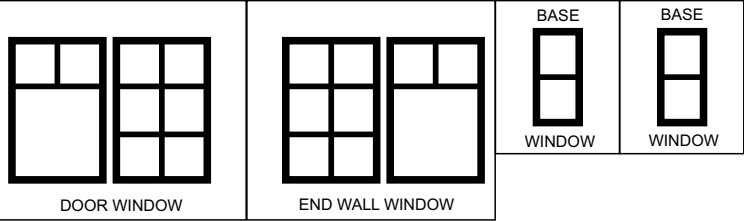
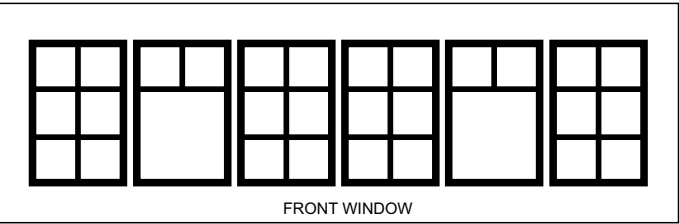
1. Different coloured arm chairs
2. Two styles of corner coverings for the walls
3. 5 different name plates
4. 2 window sets



Strathspey Signal Box v.3i

© 2014 WORDSWORTH MODEL RAILWAY

PRINT ONLY



PRINT ONTO CLEAR ACETATE